



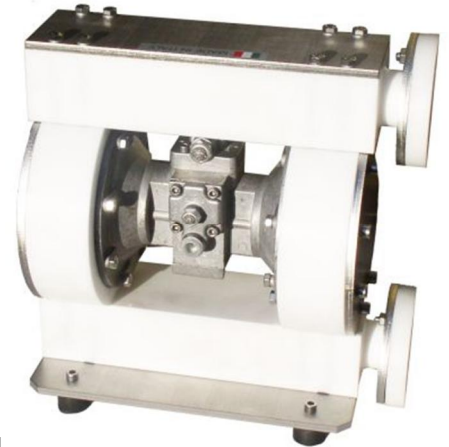
DN15 Series (1/2") PTFE

Construction Material

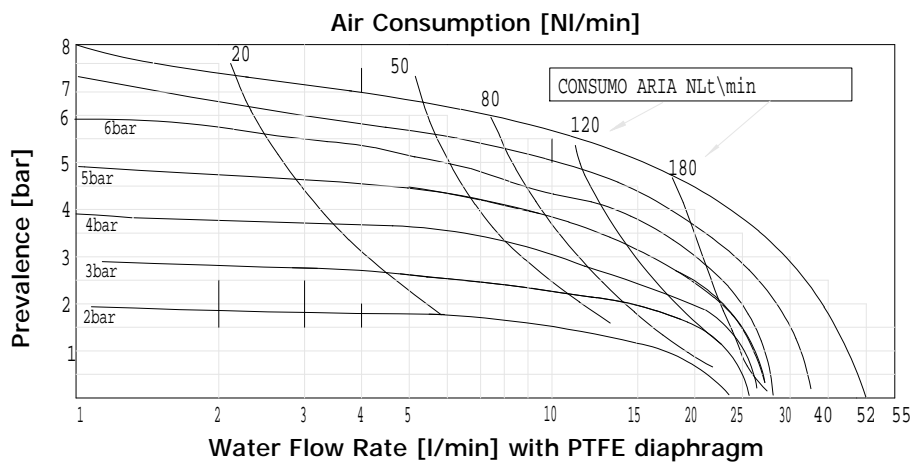
PTFE with external Stainless Steel reinforcements

Technical Data

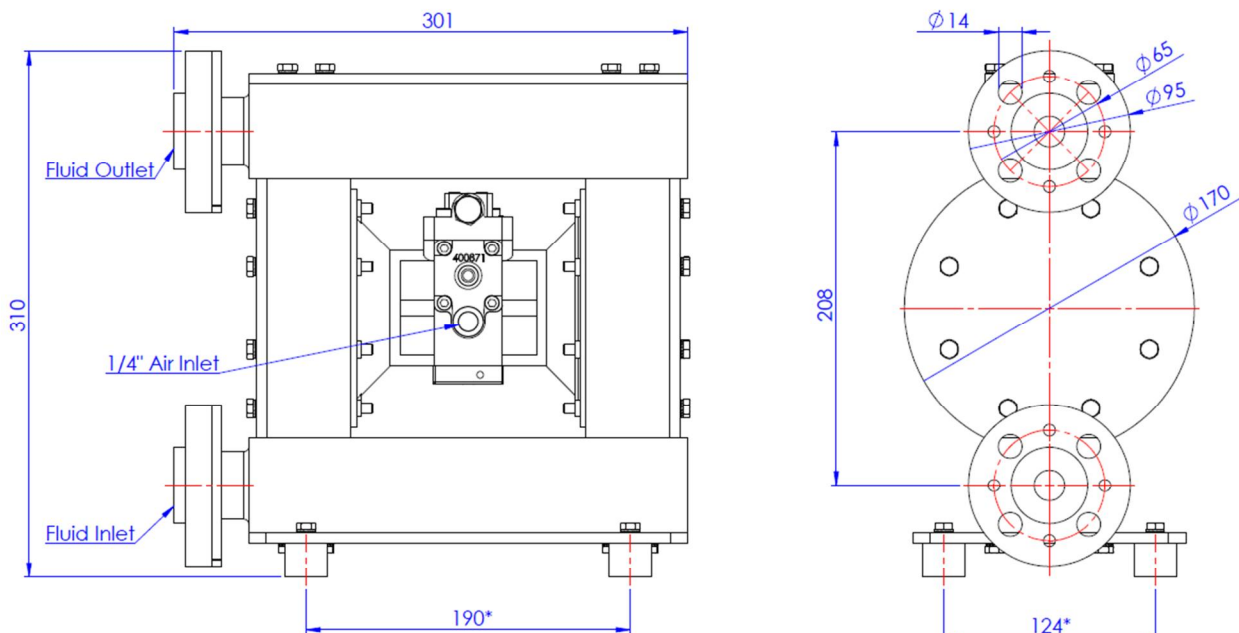
Adjustable Flow Rate [l/min]	0 ÷ 52
Attacchi Aspirazione/Mandata	DIN Flange
Max Size Solids	3 mm
Max suction lift dry / wet	4,5 m / 7 m
Air Inlet	1/4" Gas
Air Supply Pressur (Min / Max)	1 bar – 6,8 bar
Weight	17 kg
Noise Level	<50 dB[A]



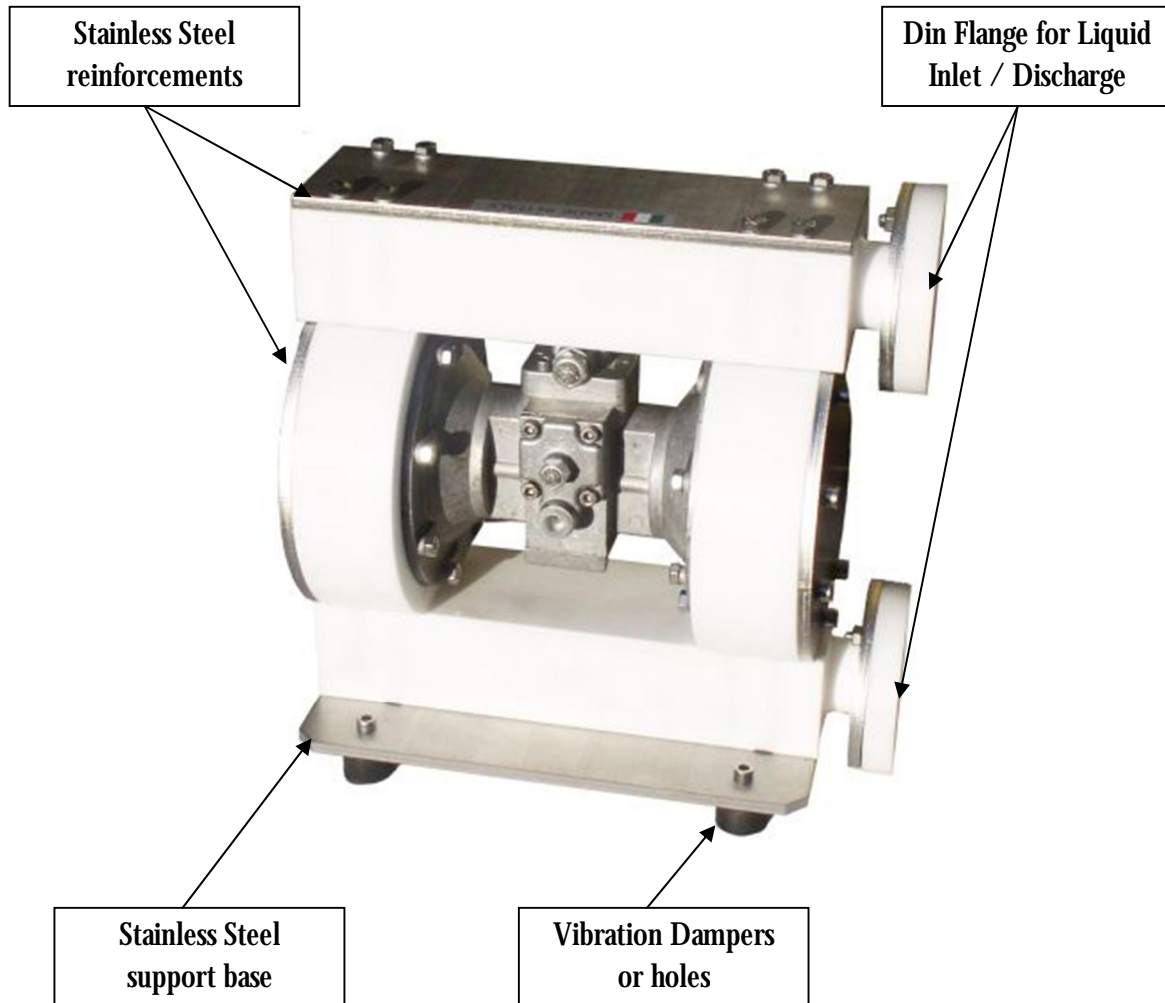
Performance



Dimensional Drawing



Capitanio - Via Riviera Berica, 39 - 36100 Vicenza Tel. +39 0444 545846 - Fax. +39 0444 540926 - www.airpumps.it capitanio@airpumps.it



Capitanio - Via Riviera Berica, 39 - 36100 Vicenza Tel. +39 0444 545846 - Fax. +39 0444 540926 - www.airpumps.it capitanio@airpumps.it